



**DEPARTMENT OF THE ARMY
U.S. ARMY CORPS OF ENGINEERS, ST. LOUIS DISTRICT
1222 SPRUCE STREET
ST. LOUIS, MISSOURI 63103**

January 3, 2024

Regulatory Branch
File Number: MVS-2023-374



Dear [REDACTED]:

This letter is regarding an approved jurisdictional determination for the site known as Mercy Hospital & Multi-Use Development HWY K. The proposed project includes the expansion of Mercy healthcare facilities, and a portion of the site is proposed for a multi-use development. The project is located in Township 48 North, Range 3 East, in St. Charles County, Missouri. Approximate geographic coordinates for the site are 38.747733°, -90.701922°.

The features addressed in this AJD were evaluated consistent with the definition of "waters of the United States" found in the pre-2015 regulatory regime and consistent with the Supreme Court's decision in Sackett on 25 May 2023. This AJD did not rely on the 2023 "Revised Definition of 'Waters of the United States,'" as amended on 8 September 2023 (Amended 2023 Rule) because, as of the date of this decision, the Amended 2023 Rule is not applicable in Missouri due to litigation. Enclosed you will find a Notification of Appeal Process (NAP) fact sheet and Request for Appeal (RFA) form. If you request to appeal this determination, you must submit a completed RFA form to the Mississippi Valley Division Office at the address shown on the form.

The features included in this approved jurisdictional determination are:

- Wetland 1 (WTL-1) (0.13-acre): Non-jurisdictional
- Stream 1 (STR-1) (1,992-Linear Feet): Non-jurisdictional
- Stream 2 (STR-2) (690-Linear Feet): Non-jurisdictional
- Upland Drainage Feature (UDF-1) (50-Linear Feet): Non-jurisdictional
- Wetland Ditch 1 (WD-1) (1,508-Linear Feet): Non-jurisdictional

In order for an RFA to be accepted by the Corps, the Corps must determine that it is complete, that it meets the criteria for appeal under 33 CFR 331.5, and that it has been received by the Division Office within 60 days of the date of the enclosed NAP. It is not necessary to submit an RFA form to the division office if you do not object to the determination in this letter.

This approved jurisdictional determination may be relied upon for five years from the date of this letter. However, the Corps reserves the right to review and revise the boundary in response to changing site conditions, information that was not considered during our initial review, or off-site activities that could indirectly alter the extent of wetlands and other resources on-site. This determination may be renewed at the end of the five-year period provided you submit a written request, and our staff are able to verify that the limits established during the original determination are still accurate.

The delineation included herein has been conducted to identify the location and extent of the aquatic resource boundaries and/or the jurisdictional status of aquatic resources for purposes of the Clean Water Act for the site identified in this request. This delineation and/or jurisdictional determination may not be valid for the Wetland Conservation Provisions of the Food Security Act of 1985, as amended. If you or your tenant are USDA program participants, or anticipate participation in USDA programs, you should discuss the applicability of a certified wetland determination with the local USDA service center, prior to starting work.

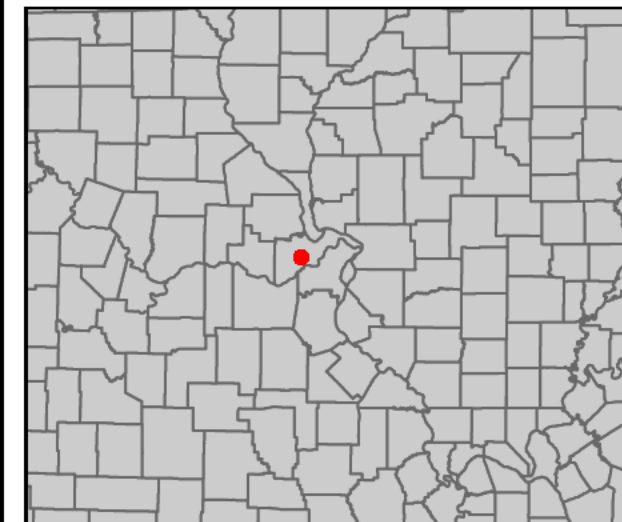
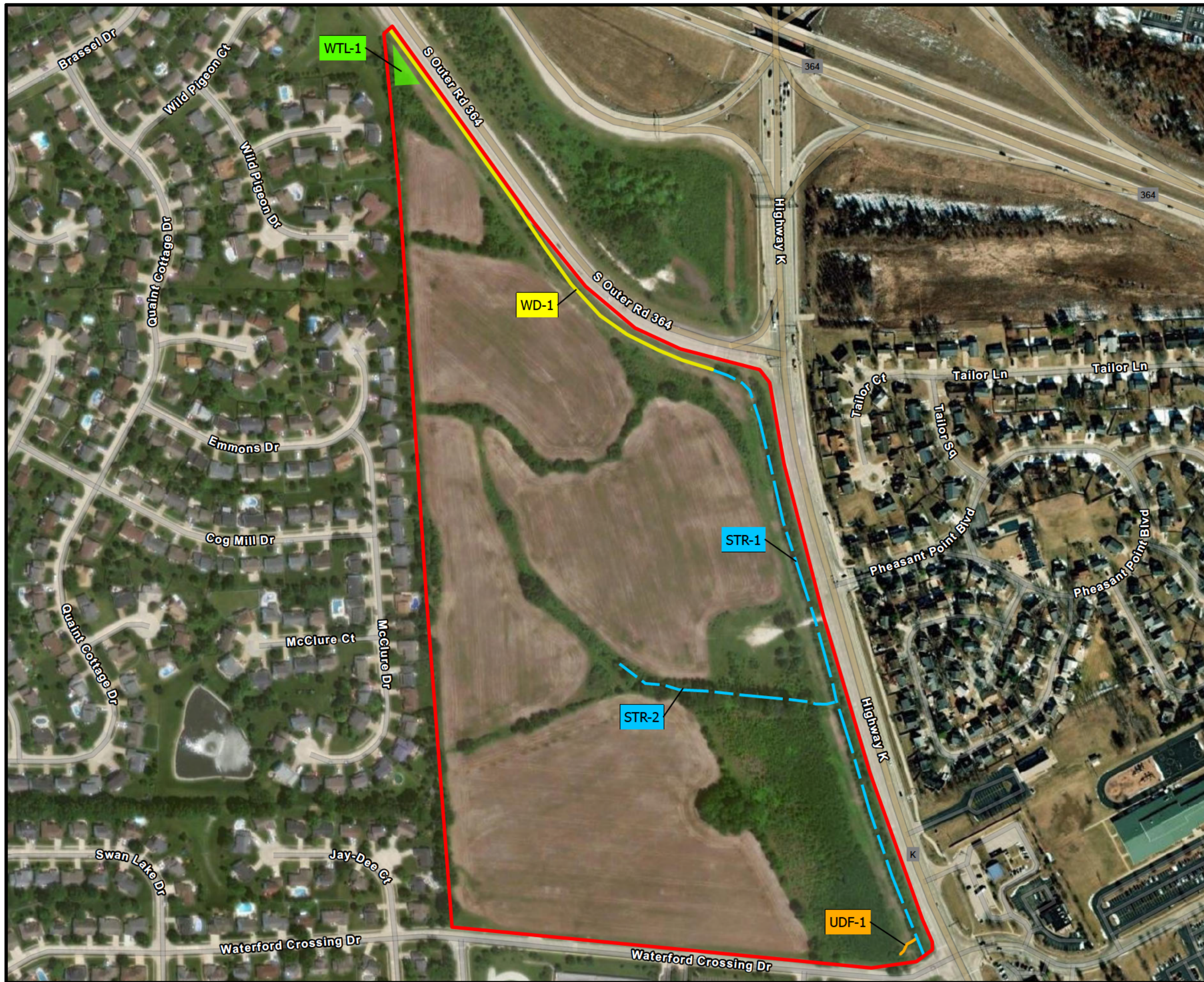
This review is applicable only to the permit program administered by the Corps of Engineers. It does not eliminate the need to obtain other Federal, state, or local approvals before beginning work and any modification that includes impacts to potential waters may require subsequent review and authorization from this office.

If you have any questions, please contact [REDACTED] in our office at [REDACTED] or [REDACTED]. In any correspondence or inquiries, please refer to the File Number **MVS-2023-374**. The St. Louis District Regulatory Branch is committed to providing quality and timely service to our customers. In an effort to improve customer service, please take a moment to go to our Customer Service Survey found on our web site at <https://regulatory.ops.usace.army.mil/customer-service-survey/>.

Sincerely,

[REDACTED]

Enclosures



Project Location

Legend

- STREAM (NON-RPW)
- WETLAND DITCH
- UPLAND DRAINAGE FEATURE
- SCRUB-SHRUB WETLAND
- AJD REVIEW AREA



US Army Corps
of Engineers®
St. Louis District

Exhibit #1 of 1
MVS-2023-374

MERCY HOSPITAL & MULTI-USE
DEVELOPMENT
SOUTH OUTER RD 364 & HIGHWAY K
O'FALLON, MISSOURI



0 300 600
Feet
Map Scale: 1 inch equals 300 feet

DATE MAP CREATED: DECEMBER 11, 2023
DRAWN BY: USACE-MVS-REGULATORY

Service Layer Credits: World Imagery: State of Missouri, STL Imagery Consortium, Maxar